

# SPECIFICATION



110t



56m



74.5m

# SRC1100T

SANY ROUGH TERRAIN CRANE

QUALITY CHANGES THE WORLD

[crane.sanyglobal.com](http://crane.sanyglobal.com)

It is one of the core business units in SANY Group, specializing in the development and manufacturing of high-end wheel cranes, crawler cranes and tower cranes, including the complete range of wheel cranes from 8 to 2400t, crawler cranes from 25 to 4500t and tower cranes from 6 to 185t.

三一集团旗下核心事业部，从事高端轮式起重机、履带起重机、塔式起重机系列产品的研发制造。覆盖8-2400吨全吨位轮式起重机，25-4500吨全吨位履带起重机，6-185吨塔式起重机。



SANY CRANE



# SRC1100T

SANY ROUGH TERRAIN CRANE  
110T LIFTING CAPACITY

An 110t rough terrain crane with 6 section 56m boom, featuring stronger lifting capacity. Key components come from name brands of reliable quality. Operator comfort is improved by brand new cab design.

一款最大起重量110吨，6节臂，全伸臂长56m的越野起重机，性能强，核心部件均为国际知名供应商提供，配备全新操纵室，驾驶、操作舒适度全面升级。





## **Strong lifting capacity**

Best in class

**超强性能**

性能超越行业同吨位

## **All new operator's cab**

Ergonomic concept of safety and comfort

**全新操纵室**

操作安全、舒适、人机工程全面升级

## **Convenient transport**

One-trailer transport at low operational cost

**超便捷运输**

一车整运，运营成本低

## **Brand-name components**

DF Cummins engine/Dana transmission/  
Meritor axles

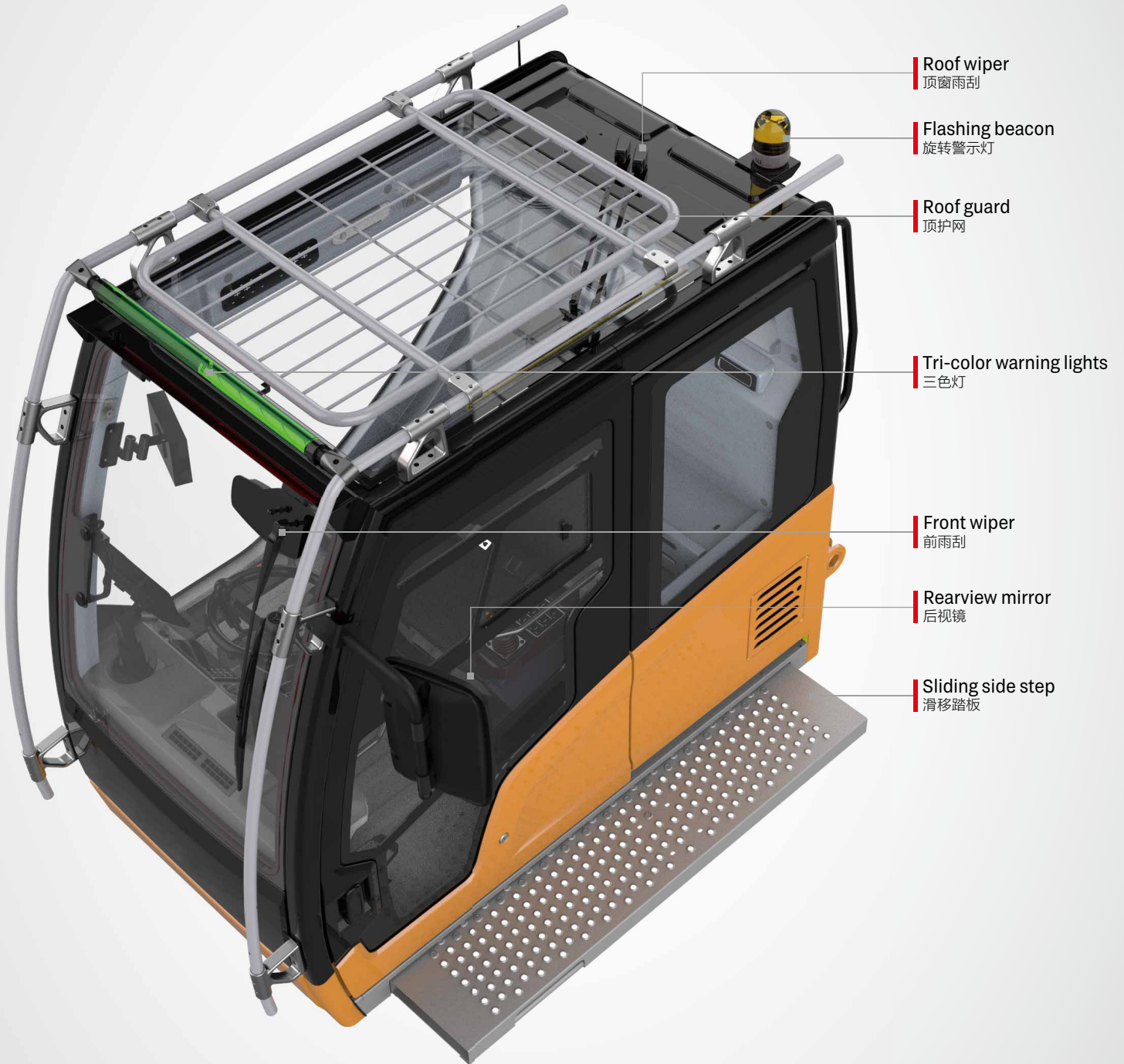
**国际知名供应商**

东风康明斯发动机/德纳变速箱/美驰车桥



# All New Operator's Cab

## 全新操纵室



Roof wiper  
顶窗雨刮

Flashing beacon  
旋转警示灯

Roof guard  
顶护网

Tri-color warning lights  
三色灯

Front wiper  
前雨刮

Rearview mirror  
后视镜

Sliding side step  
滑移踏板



**Safety & Reliability**  
安全可靠



**Comfort & Convenience**  
舒适便捷



**Simplicity & Efficiency**  
简单高效

## SPECIFICATION

Rearview and  
winch monitor  
卷扬监视器

10.1 inch LMI screen  
10.1 吋显示屏

Outrigger control  
panel  
支腿控制面板

Steering column  
方向柱

Pedals  
踏板布置

Upper control panel  
辅助面板

Emergency stop  
switch  
急停开关

Bubble level  
水平仪

Cup holder  
水杯托

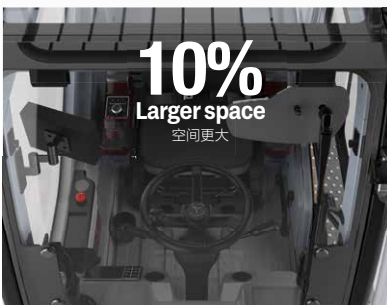
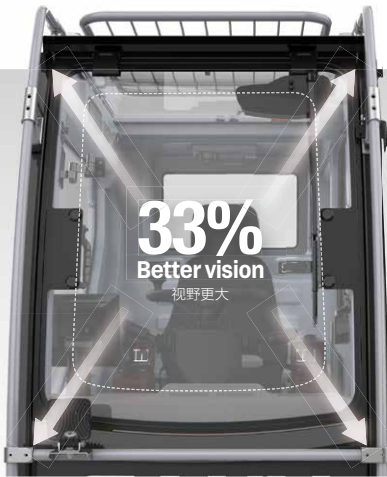
Joystick  
手柄

Joystick  
手柄

Left control panel  
左扶手箱控制面板

Right control panel &  
LMI navigation knob  
右扶手箱控制面板

Armrest  
扶手箱



Integrating SUV genes, overall space is enlarged by 10% and forward field of vision is increased by 33%. The front windshield can be opened by 70 degrees, providing better ventilation and a second emergency exit.

融入 SUV 基因, 整体空间增大 10%, 配备超大可开合 70° 前挡风玻璃, 视野提升 33%, 增加空气对流, 并可作为快速逃生通道。



Sliding door transits between tracks when closing to make perfect thermal and acoustical insulation.

侧向变轨, 滑移门完美隔绝外部环境。

Getting in and out is made more convenient with the power sliding side step.

全宽电动伸缩踏板, 超大安全便利进出通道。



## SPECIFICATION

**Adjustable** steering wheel for driving and controlling, modular control panels, and smart user interface deliver intuitive and highly efficient control.

驾控一体的方向盘、模块化控制面板、UI 智能操作界面，操作简单，为高效吊装保驾护航。

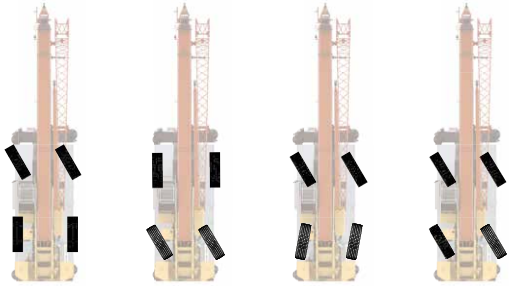


# Convenient Transport

## 行驶运输便捷性

### Four Steering Modes

#### 四种转向模型



- 2 wheel front 前轮转向模式
- 2 wheel rear 后轮转向模式
- 4 wheel 四轮转向模式
- Crab 蟹行模式



Steering control panel  
转向控制面板

### One-trailer Transport

#### 一车整运

The basic machine is transported with counterweight, jib, and hooks onboard at 55t, 3.34m wide and 3.93m high, satisfying road regulations.

主机运输尺寸为宽 3.34m, 高 3.93m, 重量为 55t (带配重、副臂和吊钩), 满足道路运输要求。



### Axle Load Distribution

#### 轴荷分布

Items 项目	Weight (kg) 重量	Load on front axle (kg) 前轴轴荷	Load on rear axle (kg) 后轴轴荷
Basic machine 主机	55000	30000	25000
Counterweight 配重	10600	-4000	14600
Fixed jib 副臂	1100	2600	-1500
Aux. boom nose 臂尖滑轮	50	160	-110
Main hook 主钩	100t	1030	-1300
	90t	830	-1050
	70t	690	-870
	50t	595	-760
Auxiliary hook 副钩	8t	160	-40

Note: boom angle remains 0°  
起重臂角度 0°

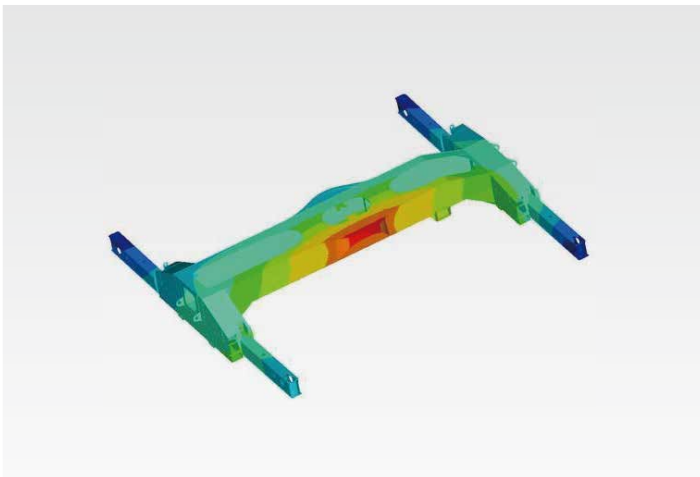
# Carrier Frame

车架底盘



Inverted trapezoidal variable cross section frame is 5% less in weight and 10% stronger in rigidity.

倒梯形变截面车架, 实现车架减重 5% 的同时, 刚性提升 10%。

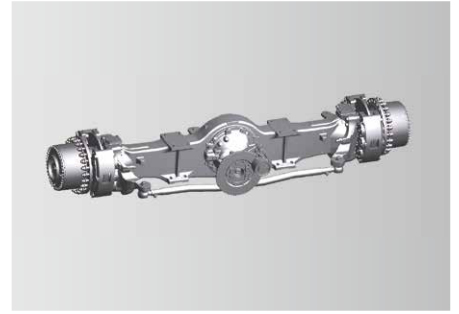
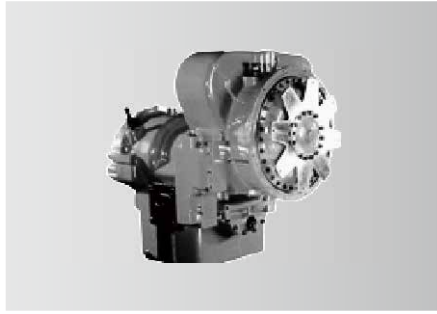
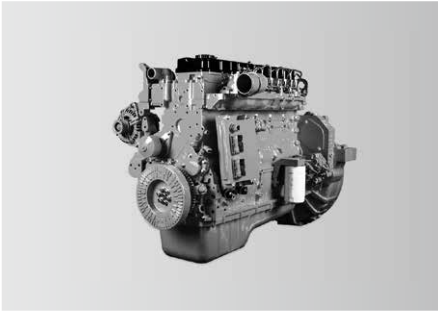


↓ 5%  
Weight 重量

↑ 10%  
Rigidity 刚性

# Power Train

## 动力系统



### Engine

Power comes from a DF Cummins QSB6.7 inline six-cylinder water-cooled, turbocharged and intercooled off-highway diesel engine, complying with Stage III emission standard.  
Rated power: 194kW/2400rpm.  
Max. torque: 990N·m/1500rpm.

### 发动机

东风康明斯 QSB6.7 三阶段非道路直列六缸水冷、增压中冷柴油发动机。  
额定功率 :194kW/2400rpm。  
最大扭矩 :990N·m/1500rpm。

### Transmission

Dana electronically controlled auto transmission features 6 speeds forward and 6 speeds reverse, wide ratio range, and smooth gearshift with reduced maintenance cost.

### 变速箱

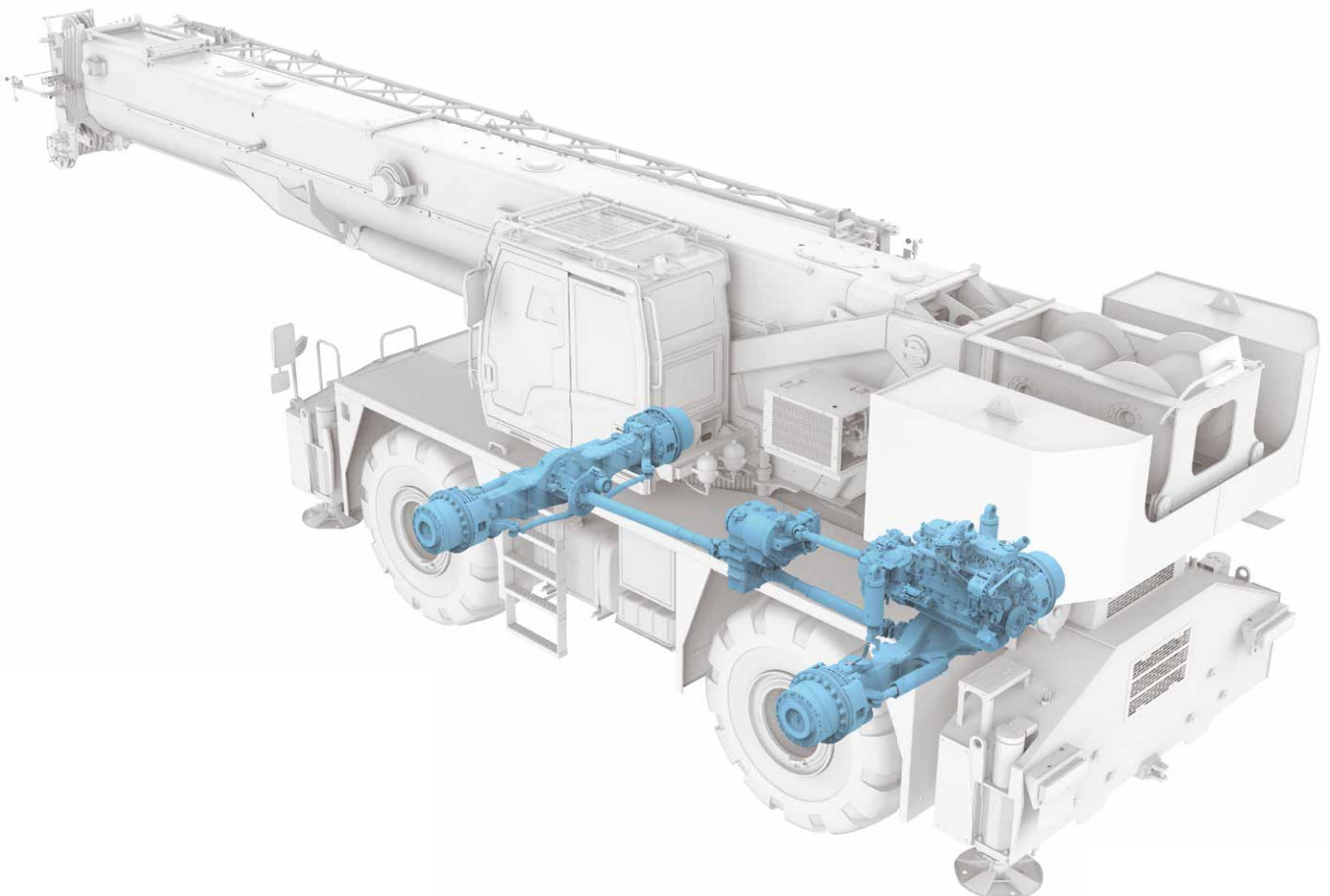
德纳全自动电控变速箱, 6 个前进挡、6 个后退挡, 速比范围大, 换挡平顺无冲击, 维修保养成本低。

### Axle and suspension

Both axles are driven and steered. Front axle is mounted to the frame by independent steel plate, and rear adopts oscillation cylinders with hydraulic lockout. Driving comfort and lateral stability is therefore guaranteed on rough terrains and conditions.

### 车桥悬挂

前后桥均为驱动桥和转向桥。前桥采用独立式钢板连接, 后桥采用摆动支架式, 液压油缸闭锁悬架系统; 能适用各种恶劣工况和路面, 保证车辆行驶的平顺性和侧翻稳定性, 驾驶舒适。



# Electrical System

## 电气系统

### Smart CAN-BUS communication system

International advanced CAN-BUS data communication network applied for display, instrument panel, I/O module, joysticks and main sensors, allowing for high-speed data transmission and quick response in less than 20ms.

### Winch camera (optional)

Winch cameras equipped for monitoring its working condition and identifying rope disorder in time.

### Integrated bus button panel input

Various operating states displayed by button indicator lights, and one-button multi-functional operation realizable by writing various operation modes.

### 智能总线通信系统

国际先进的分布式集成总线数据通信网络，显示器、显示仪表、I/O 模块、操作手柄、主要传感器等采用 CAN 总线组网，高速信息传输、响应速度小于 20ms。

### 卷扬监控系统(选配)

卷扬摄像头监视卷扬工作及及时发现乱绳的情况。

### 集成总线按键面板输入

可通过按键指示灯显示各种工作状态，通过写入多种操作模式实现一键多功能。



Centralized electric cabinet  
集中式电控箱



Anti-two-block switch  
高度限位器



Third wrap indicator  
三圈保护器



Cable reel  
电缆卷筒



Anemometer  
风速仪

**Multi-functional screen**

Large 10.1 inch HD touch screen display with all new interface. Incorporated crane setup, load charts, working conditions, working period, virtual wall, Bluetooth, radio and diagnostics with an additional navigation knob.

**Precise load moment indicator**

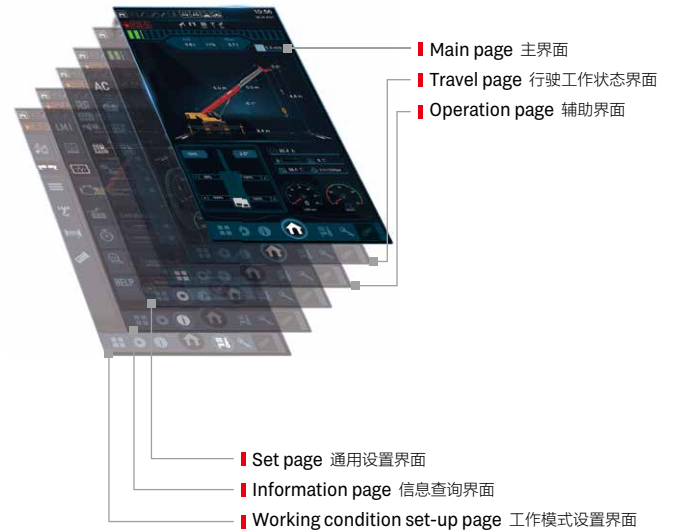
SANY independently developed LMI, accuracy of 0 ~ 5%.

**高新多功能显示屏**

采用 10.1 寸高清显示屏, 全新操作界面, 可实现触摸与旋钮多种方式操控。工况、力矩、发动机、变速箱、控制器 IO 点、工作时间统计等丰富的设备状态信息呈现, 集成虚拟墙、蓝牙、收音机等多种扩展功能。

**精准力矩器系统**

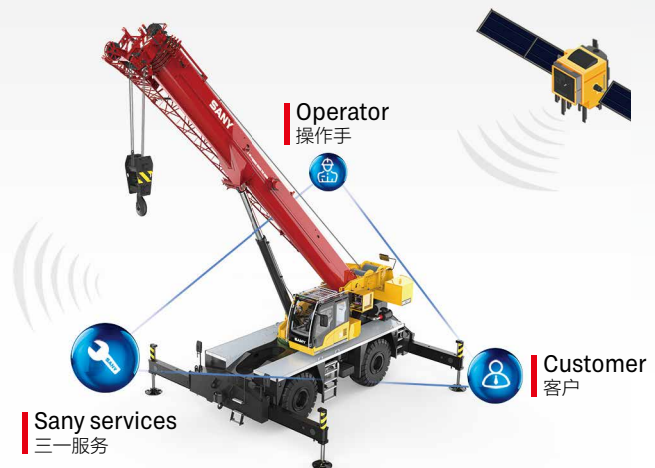
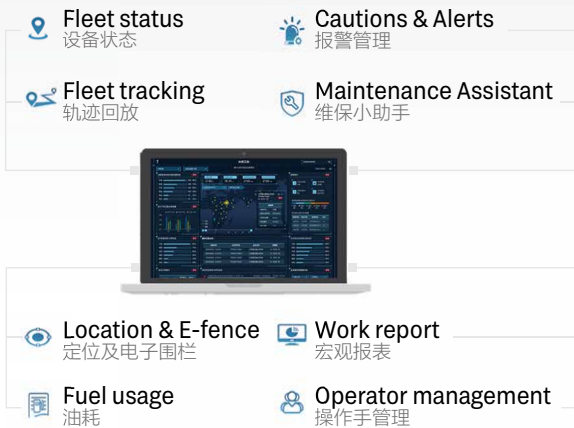
三一自主研发的力矩限制器系统, 精度达 0~5%。



**MachineLink<sup>+</sup>**

ROOTCLOUD T-AMS Pro device comes as standard to realize GPS trajectory, machine status, maintenance management, E-fence, alarm management, and operator management on computer or mobile MachineLink+ platform, by remote control of cranes. This telematics package greatly boosts efficiency of customer fleet management and helps provide better after-sales services.

标配树根物联终端 T-AMS Pro, 通过对起重机设备的远程控制, 在电脑或移动端 MachineLink+ 平台实现轨迹回放、设备状态、维保设备、电子围栏、报警管理、操作手管理等功能, 极大提高客户设备管理效率, 提升三一售后服务能力。



## Hydraulic System

### 液压系统

Five boom sections independently extended by single cylinder pinning mechanism for variable length combinations..

6 节主臂, 大臂间彼此独立, 采用单缸插销伸缩机构, 臂长任意组合。

## Superstructure

### 上车

Open-type electronically controlled load-sensing system and dynamic slewing brake system. Electro proportional compensated passive luffing-down system applied to control the luffing speed, making luffing more reliable and stable.

Dynamic slewing brake realizing precise control of slewing speed.

Electronically controlled load-sensing hydraulic system, electronic joystick and electronic throttle, ensuring easy operation and more accurate control and millisecond-level action response speed, with min. single-rope hoisting speed 0.8m/min, and distribution difference in case of combined motions 8%.

通过开式电控负载敏感系统和动态回转制动系统；

电比例自重落幅系统控制落幅速度, 更可靠更平稳；

具备动态回转制动功能, 可实现回转速度精准控制；

电控负载敏感液压系统, 采用电手柄、电油门控制, 轻松操作的同时, 控制更精准；动作响应毫秒级速度；卷扬单绳最低速度 0.8m/min；复合动作分配误差 8%。



## Chassis

下车

### Steering system

A gear pump installed to supply oil for hydraulic steering, steering pressure controlled by electro-proportional relief valve, four steering modes realized by solenoid directional valve.

### Suspension system

Different modes including normal driving and Pick & Carry with suspension locked, suspension to be locked when the crane is working.

### Outrigger telescoping system

The electro proportional relief valve identifies pressure staging of outrigger telescoping, satisfying operation requirements under high pressure and forming protection under limited pressure.

### 转向系统

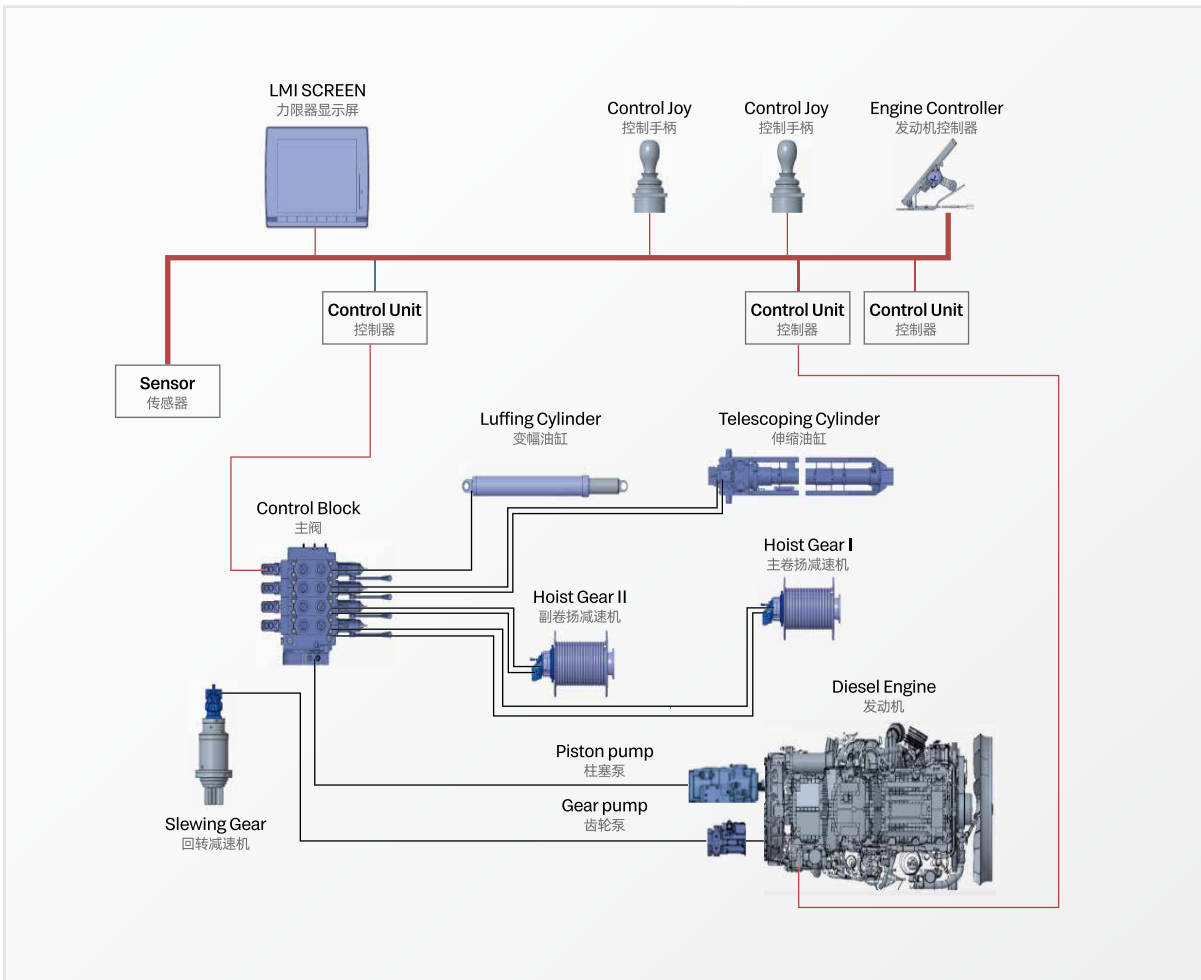
液压转向系统采用齿轮泵提供油源,通过电比例溢流阀精确控制转向压力,通过电磁换向阀实现前轮转向,后轮转向,全轮转向和蟹行转向共计四种转向模式。

### 悬挂系统

悬挂系统通过选择不同的悬挂模式可以实现正常行驶和锁定模式下的带载行驶;在起重机上车作业时能够对悬挂进行锁定。

### 支腿伸缩系统

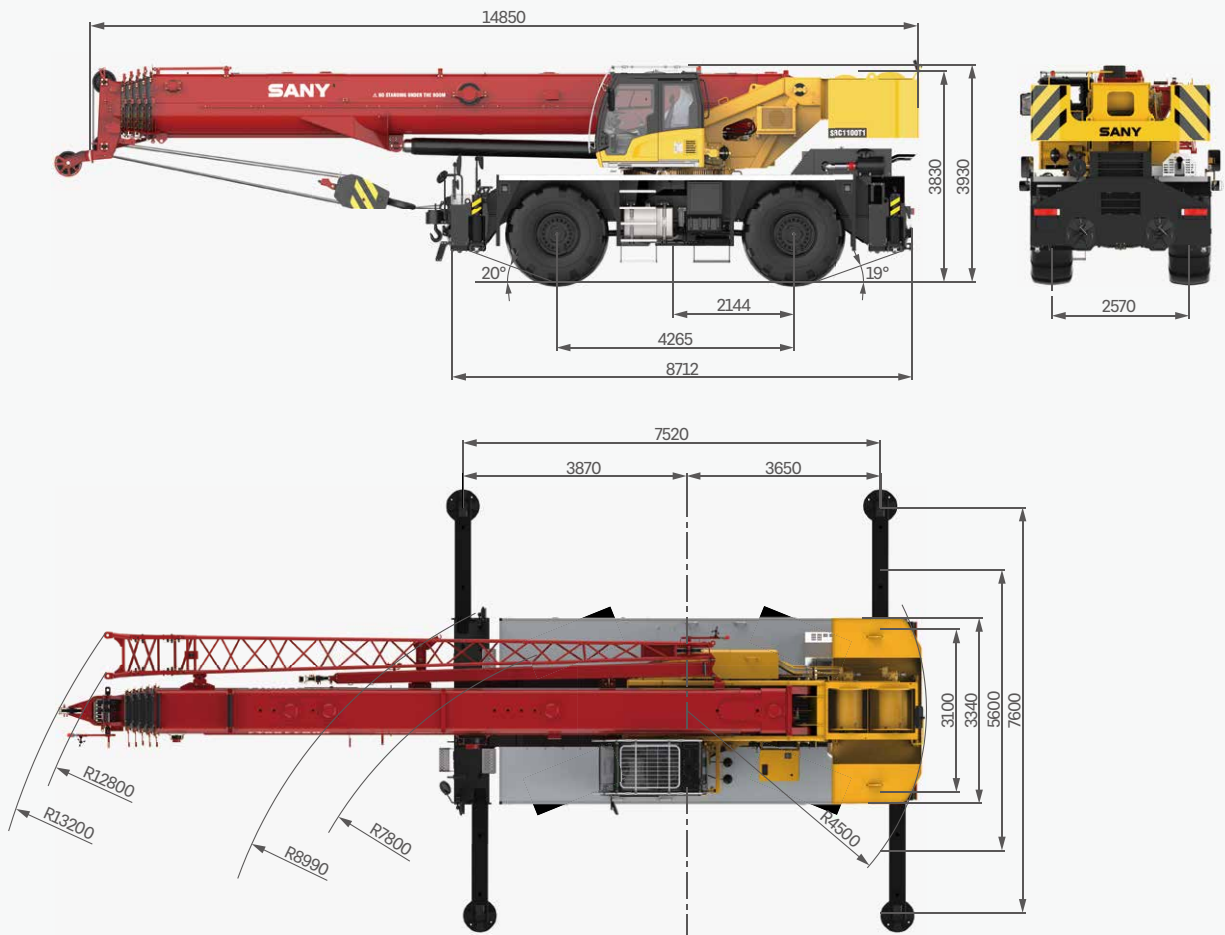
支腿伸缩采用电比例溢流阀对支腿伸缩进行压力分级,既满足高压动力动作需求,也可满足限压保护功能。





# Overall Dimensions

整机尺寸



# Technical Specification

## 整机参数

CATEGORY 类型	ITEM 项目	UNIT 单位	VALUE 参数	
CAPACITY 额定起重量	Max. lifting capacity 最大起重量	t	110	
WEIGHT 重量参数	Gross weight 整机总质量	kg	55000	
POWER 发动机参数	Engine model 发动机型号 (排放标准)	-	Cummins QSB6.7 (Tier III)	
	Max. engine power 发动机最大功率	kW/rpm	194/2400	
	Max. engine torque 发动机最大输出扭矩	N·m/rpm	990/1500	
DIMENSIONS 尺寸参数	Overall length 整机全长	mm	14850	
	Overall width 整机全宽	mm	3340	
	Overall height 整机全高	mm	3930	
TRAVEL 行驶参数	Max. travel speed 最高行驶速度	km/h	30	
	Wheel formula 车轮模式	-	4 × 4, 4 × 2	
	Min. ground clearance 最小离地间隙	mm	530	
	Approach angle 接近角	°	20	
	Departure angle 离去角	°	19	
	Max. gradeability 最大爬坡度	-	75%	
	Fuel consumption per 100km 每 100 公里油耗	L	120	
MAIN PERFORMANCE 主要性能参数	Working temperature range 使用温度区间	℃	-30~+51	
	Min. rated lifting radius 最小额定幅度	m	2.5	
	Tail slewing radius 转台尾部回转半径	mm	4.5	
	Boom sections (Qty.) 臂节数	-	6	
	Boom shape 臂形状	-	U shape U 型	
	Max. lifting moment 最大起重力矩	Basic boom 基本臂	kN·m	3057
		Full-extension boom 全伸主臂	kN·m	1393
		Full-extension boom + jib 全伸主臂 + 副臂	kN·m	1195
	Boom length 臂长	Basic boom 基本臂	m	12.5
		Full-extension boom 全伸主臂	m	56
		Full-extension boom + jib 全伸主臂 + 副臂	m	74
	Max. lifting height 最大起重高度	Basic boom 基本臂	m	13.5
		Full-extension boom 全伸主臂	m	56.5
		Full-extension boom + jib 全伸主臂 + 副臂	m	74.5
	Outrigger span (Longitudinal × Transverse) 支腿跨距 (纵 × 横)	m	7.52 × 7.6	
Jib offset 副臂安装角度	°	0,20,40		
AIRCONDITIONER 空调	In operator's cab 上车空调	-	Heating & Cooling 制冷、制热	

# Technical Specification

## 整机参数



Hook 吊钩

Rated load 额载 /t	Number of sheaves 滑轮数量	Rope rate 倍率	Hook weight/kg 吊钩重量
○ 100	8	16	1030
○ 90	6	12	830
● 70	5	10	690
○ 50	4	8	595
● 8	-	1	160

● Standard 标配 ○ Optional 选配



Operations 主要动作参数

Item 项目	Max. single rope lifting speed (empty load) 单绳速度 (空载)	Rope diameter/length 钢丝绳直径 / 长度	Max. single line pull 最大单绳拉力
Main winch 主卷扬	150m/min	20mm/300m	8.3t
Auxiliary winch 副卷扬	150m/min	20mm/165m	8.3t
Slewing speed 回转速度	1.8r/min		
Full luffing up/down time of boom 主臂起落幅时间	70s/72s		
Full extension/retraction time of boom 主臂伸缩时间	350s/360s		
Outrigger jack 垂直支腿	Retraction 缩	32s	
	Extension 伸	30s	
Outrigger beam 水平支腿	Retraction 缩	15s	
	Extension 伸	23s	

# Crane Introduction

## 整机介绍

Carrier 下车

### Carrier frame 车架

- Double longitudinal beam construction welded by high strength steel plate, higher bearing capacity.
- 车架为高强度钢板焊接而成的双纵梁结构，承载能力强。

### Engine 发动机

- Model: DF Cummins QSB6.7 inline six-cylinder diesel engine with watercooler and inter cooler.
- Rate power: 194kW/2400rpm.
- Emission standard: Tier III.
- Fuel reservoir capacity: 350L.
- 型号：东风康明斯 QSB6.7 直列六缸、水冷却、增压中冷、柴油发动机。
- 额定功率：194kW/2400rpm。
- 排放标准：符合 III 阶段。
- 油箱容积：350L。

### Transmission 变速箱

- Auto-transmission, 6 forward gears and 6 reverse gears, large speed ratio range, adaptable to slope climbing and high-speed traveling.
- 自动变速箱，变速箱有 6 个前进档、6 个后退档，速比范围大，即可满足低速场地爬坡行驶又可满足高速行驶。

### Axle 车桥

- Two axle chassis of flexible maneuverability, four-wheel drive, excellent dynamic performance.
- 操控灵活，底盘两桥设计，前、后桥驱动，动力性能好。

### Suspension system 悬挂

- The front is rigidly mounted, and the rear axle adopts pivot oscillation suspension with hydraulic lockout.
- 前桥刚性连接，后桥带油缸锁定枢轴摆动悬挂。

### Tires 轮胎

- Large diameter off-road 29.5-25 tires deliver large ground clearance and strong off-road agility.
- 大直径越野轮胎，离地间距大，越野性能强，轮胎型号 29.5-25。

### Braking 制动系统

- Dual circuit braking system. When one circuit fails, the other can still work normally, improving the safety and reliability of the braking system.
- 双回路制动系统，当某一回路出现故障时，另一回路仍能正常工作，提高制动系统的安全性和可靠性。

### Hydraulics 液压系统

- Adopt stable and high-quality main oil pump, enhancing system reliability. Precise parameter matching contributes to superior controllability of the vehicle.
- 采用稳定、高品质的主油泵，系统可靠性高；通过精确的参数匹配，操控性能优越。

### Outrigger 支腿

- H-type telescoping outrigger, 4-point support, with span (longitudinal × transverse) 7.52m × 7.6m.
- 采用 H 形伸缩支腿，4 点支撑，纵、横跨距 7.52m × 7.6m。

### Control system 控制系统

- CAN-BUS: The bus instrument of integrated intelligent control electrical system can display driving parameters at any time, making driving easier. At the same time, engine failure prompt makes the maintenance and troubleshooting more convenient and faster.
- All-round safety protection, the main and auxiliary hoists are equipped with three-circle indicators and A2B switches to prevent over-hoist-down and over winding of the wire ropes.
- Load moment indicator: It adopts highly intelligent moment indicator system to fully protect lifting operation and ensure accuracy, stability and comfort.
- 总线仪表：采用集成一体智能控制电气系统的总线仪表，可随时掌控行驾参数，驾乘轻松；同时拥有发动机故障提示功能，维修排故方便、快捷。
- 全方位的安全保护系统，主、副卷扬配置三圈保护器和高度限位器，防止钢丝绳过放和过卷，防倾翻保护，极限角度保护。
- 力 limiter：采用高度智能力矩限制器系统，全方位保护吊载作业，确保操作精准、平稳、舒适。

# Crane Introduction

## 整机介绍

### Operator's cab 操纵室

- New generation T-series operator's cab features curved-rail sliding door, safety glass and corrosion resistant steel construction with softened interior trim. Large internal space with panoramic skylight, adjustable seat and other user-friendly design incl. A/C, electric wiper, making it more comfortable and easier to work. The LMI screen is equipped to realize the logic integration of the control console and the display, so that all working data can be seen at a glance.
- 全新一代 T 系列操纵室，带变轨滑移门，配备安全玻璃，耐腐蚀钢板，配置软化内饰、超大内部空间、可调式座椅等人性化设计，配有空调、电动雨刮器，操作更舒适、轻松；配置力矩限制器显示屏，实现主控台与操作显示系统有机结合，使吊装作业的全部工况数据一目了然。

### Boom system 臂架系统

- Boom: Six-section, basic boom 12.5m, full-extension 56m, made of high-strength welded structural steel with U-shape cross-section.
- Jib: Two-section, 10.5m / 18m, offset at 0°, 20°, 40°.
- 主臂：六节臂，基本臂 12.5m，全伸臂 56m，由高强度焊接结构钢制成，U 形截面。
- 副臂：两节副臂，分别为 10.5m 和 18m，安装角度为 0°，20°，40°。

### Slewing platform 转台结构

- SANY independently developed, made of fine grain high strength steel in optimized structure.
- 三一自主设计，结构更优化，由细晶粒高强度钢制成。

### Hydraulics 液压系统

- Load sensing variable piston pump can adjust displacement in real time to achieve high precision flow control, greatly reducing energy loss.
- Winch adopts electronically controlled variable motor with high operation efficiency. Max. single rope speed of main and auxiliary winch is 150m/min.
- Slewing system integrating slewing buffer and free swing technology, start & brake process is smoother and the inching motion performance is ever better.
- 采用负载敏感变量柱塞泵，能实时调节油泵排量，实现高精度的流量控制，极大的降低能量损耗。
- 卷扬采用电控变量马达，作业效率高；主、副卷扬单绳速度最大达 150m/min。
- 回转系统带集成回转缓冲阀，具有自由滑转功能，回转启动和控制平稳，微动性卓越。

### Hoist 起升机构

- Pump and motor double variable speed regulation, highly efficient and energy saving. Balance valve and unique anti-hook-slip technology are perfectly coupled to achieve smooth rise and fall of the load. Nonrotation high strength wire rope is used.
- 泵、马达双变量调速，高效节能。卷扬平衡阀与独特的防溜钩技术完美结合，重物起落平稳。配备防旋转高强度钢丝绳。

### Luffing system 变幅系统

- Double acting single rod hydraulic cylinder with balance valve, luffing angle: -2°~ 80°. Passive luffing down.
- 双作用单活塞杆液压缸，带安全平衡阀，变幅角度：-2°~80°，采用自重落幅系统。

### Slewing 回转系统

- 360° slewing in both directions, max. speed 1.8r/min, hydro speed control. The unique slewing balance design makes the braking smoother.
- 360° 转动，最大回转速度 1.8r/min。液控比例调速控制。独特的回转缓冲设计，制动更平稳。

### Counterweight 配重

- Fixed block 10.6t.
- 固定配重 10.6t。

### Safety equipment 安全装置

- Load moment indicator: Analytical mechanics is applied and moment limiter calculation system based on the hoisting mechanics model is established. Through online empty-load calibration, the rated accuracy can reach 0-5% to fully protect the hoisting operation. In case of overload, the system will automatically give an alarm to guarantee safety operation.
- The hydraulic system includes balance valve, relief valve, two-way holding valve, etc. to realize system stability and reliability.
- The main and auxiliary winches are equipped with third-wrap indicators to prevent over-hoist-down of the wire rope.
- Boom head and jib head are equipped with A2B switches to prevent the wire rope from over winding.
- The length & angle sensor and pressure sensor are equipped to signify working status in real time, automatically stopping hazardous actions with buzzer alarm.
- 力矩限制器：采用分析力学方法，建立了基于吊重力学模型的力矩限制器计算系统，通过在线空载标定，额定吊重精度达到 0-5%，全方位保护吊载作业；超载作业时，系统自动报警提示，为操纵作业提供安全保障。
- 液压系统配置平衡阀、溢流阀、双向液压锁等元件，实现液压系统稳定可靠。
- 主、副卷扬配置三圈保护器，防止钢丝绳过放。
- 主、副臂臂端配置高度限位器，防止钢丝绳过卷。
- 配置长度角度传感器、压力传感器，实时显示起重机作业状态，自动切断危险动作，蜂鸣报警。

### Optional equipment at extra fees 选配

- Winch camera / Boom tip camera / Reversing camera / 100t hook block / 90t hook block / 50t hook block / Spark arrester / Air intake shutoff valve / Outrigger pads / Hydraulic cylinder for jib deployment / Kessler axles / other equipment available upon request.
- 卷扬监控 / 臂尖摄像头 / 倒车监控 / 100t 吊钩 / 90t 吊钩 / 50t 吊钩 / 火星灭火器 / 发动机进气关断阀 / 支腿垫板 / 副臂推拉油缸 / 凯斯兰车桥 / 其他选配视需求定。

# Working Conditions

工况组合



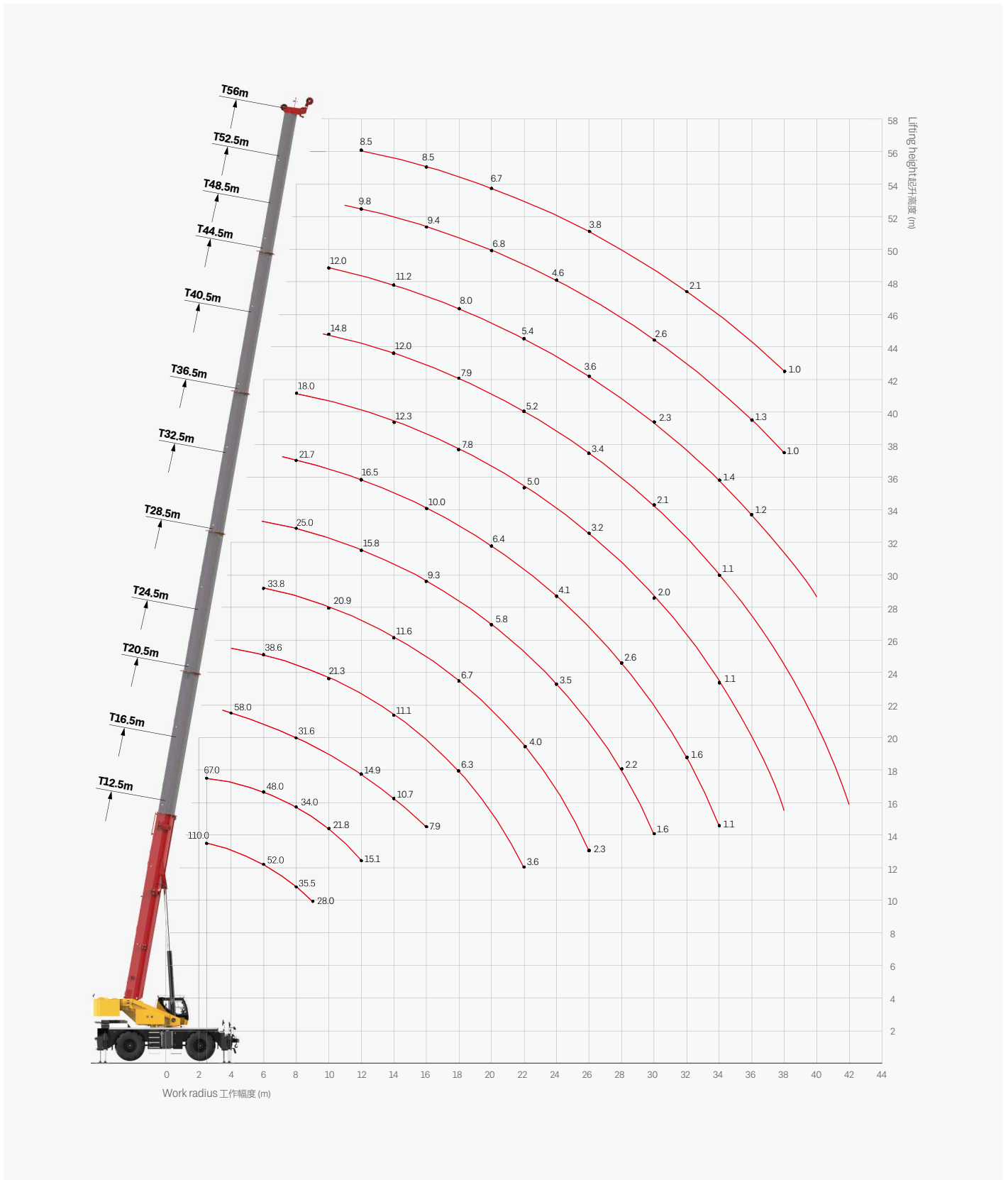
Telescopic boom on outriggers  
主臂、支腿吊载

Fixed jib on outriggers  
固定副臂、支腿吊载

Telescopic boom on tires  
主臂、轮胎吊载

# Operating Range - Telescopic Boom

## 起升高度曲线 - 主臂



# Load Chart-Telescopic Boom

## 性能表 - 主臂

Unit: metric ton



Radius (m) 幅度	12.5	16.5	16.5	20.5	20.5	20.5	20.5	24.5	24.5	24.5	24.5	28.5	28.5	28.5	32.5	Radius (m) 幅度
2.5	110.0*	67.0	36.0													2.5
3.0	90.0	67.0	36.0	60.0	51.5	36.0	29.5									3.0
3.5	78.0	67.0	36.0	59.0	51.5	36.0	27.5	48.0	46.0	36.0	29.0					3.5
4.0	71.0	67.0	36.0	58.0	51.5	36.0	25.8	48.0	46.0	36.0	27.4					4.0
4.5	65.0	62.5	33.9	54.5	51.5	36.0	24.2	45.7	46.0	36.0	26.0	37.6	33.0	23.0		4.5
5.0	60.0	57.0	32.3	51.2	51.5	34.8	22.8	43.0	46.0	36.0	24.6	36.5	32.9	22.1		5.0
5.5	55.0	51.7	30.8	48.6	49.5	33.4	21.6	40.8	46.0	34.8	23.5	35.2	32.8	21.1		5.5
6.0	52.0	48.0	29.3	46.0	48.0	32.0	20.5	38.6	46.0	33.6	22.4	33.8	32.6	20.0	28.4	6.0
6.5	47.0	44.8	28.1	42.6	44.0	31.0	19.5	36.5	41.5	32.5	21.4	32.4	32.1	19.2	27.7	6.5
7.0	43.0	41.5	27.0	39.3	40.3	30.0	18.5	34.9	38.3	31.5	20.5	30.9	31.7	18.5	27.0	7.0
8.0	35.5	34.0	24.9	31.6	32.5	27.7	17.0	30.2	31.5	29.5	18.9	28.2	30.0	17.2	25.0	8.0
9.0	28.0	27.5	23.3	26.2	27.0	26.0	15.7	25.1	26.4	27.8	17.3	24.5	27.3	16.0	23.5	9.0
10.0		21.8	22.0	21.5	22.2	24.5	14.5	21.3	22.6	24.9	15.5	20.9	23.6	15.0	20.8	10.0
11.0		18.1	20.1	17.9	18.4	20.8	13.5	18.0	19.0	21.0	14.0	18.1	20.7	13.8	18.2	11.0
12.0		15.1	17.2	14.9	15.6	17.8	12.7	15.0	16.0	18.0	12.8	15.7	17.8	12.7	15.8	12.0
14.0				10.7	11.5	13.7	11.2	11.1	12.0	13.8	10.9	11.6	13.6	11.0	12.2	14.0
16.0				7.9	8.7	10.8	10.2	8.3	9.0	10.9	9.5	8.8	10.8	9.6	9.3	16.0
18.0							8.2	6.3	7.0	8.8	8.5	6.7	8.8	8.6	7.4	18.0
20.0								4.7	5.5	7.2	7.6	5.2	7.2	7.7	5.8	20.0
22.0								3.6	4.3	5.9	6.4	4.0	5.9	6.7	4.5	22.0
24.0												3.0	4.9	5.7	3.5	24.0
26.0												2.3	4.0	4.8	2.7	26.0
28.0															2.2	28.0
30.0															1.6	30.0
32.0																32.0
34.0																34.0
36.0																36.0
38.0																38.0
40.0																40.0
42.0																42.0
Telescoping status(%) 伸缩模式																
2nd boom 二节臂	0	46	0	92	46	0	0	92	46	0	0	92	0	0	92	2nd boom 二节臂
3rd boom 三节臂	0	0	0	0	46	0	0	46	46	0	0	46	46	0	46	3rd boom 三节臂
4th boom 四节臂	0	0	0	0	0	0	0	0	46	46	0	46	46	0	46	4th boom 四节臂
5th boom 五节臂	0	0	0	0	0	46	0	0	0	46	46	0	46	92	46	5th boom 五节臂
Top boom 六节臂	0	0	46	0	0	46	92	0	0	46	92	0	46	92	0	Top boom 六节臂
Rope rate 钢丝绳倍率	16	10	6	9	8	6	5	7	7	6	5	6	5	4	4	Rope rate 钢丝绳倍率

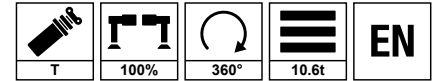
Remark: the rating with \* requires two additional sheaves.  
带 \* 值需安装 2 个辅助滑轮



# Load Chart-Telescopic Boom

## 性能表 - 主臂

Unit: metric ton



Radius (m) 幅度	32.5	32.5	36.5	36.5	36.5	40.5	40.5	40.5	44.5	44.5	44.5	48.5	48.5	52.5	56.0	Radius (m) 幅度
2.5																2.5
3.0																3.0
3.5																3.5
4.0																4.0
4.5																4.5
5.0																5.0
5.5																5.5
6.0	27.0	19.8														6.0
6.5	27.0	19.1														6.5
7.0	27.0	18.5	21.7	19.2	16.0											7.0
8.0	26.3	17.2	21.7	19.2	15.0	18.0	15.0	14.5								8.0
9.0	25.5	16.2	21.0	19.2	14.2	18.0	15.0	13.8	14.8	12.8	12.4					9.0
10.0	22.2	15.1	19.8	18.8	13.4	18.0	15.0	13.2	14.8	12.8	12.4	12.0	10.8			10.0
11.0	19.4	13.8	18.1	18.1	12.6	17.0	14.5	12.6	14.2	12.2	12.0	12.0	10.8	10.0		11.0
12.0	16.7	12.7	16.5	17.1	11.9	16.0	13.6	12.0	13.6	11.8	11.5	12.0	10.8	9.8	8.5	12.0
14.0	13.2	11.0	12.8	13.7	10.6	12.3	12.5	11.0	12.0	10.8	10.7	11.2	10.4	9.6	8.5	14.0
16.0	10.3	9.7	10.0	10.9	9.5	9.8	11.0	9.8	9.7	9.9	9.8	9.8	9.5	9.4	8.5	16.0
18.0	8.3	8.7	8.0	8.8	8.6	7.8	8.9	8.8	7.9	8.9	9.0	8.0	8.7	8.1	7.9	18.0
20.0	6.7	7.9	6.4	7.2	7.8	6.3	7.3	7.7	6.4	7.3	7.5	6.5	7.1	6.8	6.7	20.0
22.0	5.5	6.7	5.2	6.0	6.7	5.0	6.1	6.5	5.2	6.1	6.1	5.4	5.9	5.6	5.5	22.0
24.0	4.5	5.7	4.1	4.9	5.7	4.0	5.1	5.5	4.2	5.1	5.2	4.4	4.9	4.6	4.6	24.0
26.0	3.7	4.9	3.3	4.1	4.7	3.2	4.3	4.6	3.4	4.3	4.4	3.6	4.1	3.8	3.8	26.0
28.0	3.0	4.2	2.6	3.5	4.1	2.6	3.6	4.0	2.7	3.6	3.7	2.9	3.4	3.2	3.1	28.0
30.0	2.4	3.7	2.1	2.9	3.5	2.0	3.0	3.4	2.1	3.0	3.1	2.3	2.8	2.6	2.6	30.0
32.0			1.6	2.4	3.0	1.6	2.5	2.9	1.6	2.6	2.6	1.8	2.3	2.1	2.1	32.0
34.0			1.1	2.0	2.5	1.1	2.1	2.5	1.1	2.1	2.2	1.4	1.9	1.7	1.7	34.0
36.0							1.7	2.1		1.8	1.8	1.2	1.5	1.3	1.3	36.0
38.0							1.5	1.8		1.5	1.5		1.2	1.0	1.0	38.0
40.0										1.1	1.3					40.0
42.0											1.0					42.0
<b>Telescoping status(%) 伸缩模式</b>																
2nd boom 二节臂	46	0	92	46	0	92	46	0	92	46	0	92	46	92	100	2nd boom 二节臂
3rd boom 三节臂	46	0	46	46	0	92	46	46	92	46	92	92	92	92	100	3rd boom 三节臂
4th boom 四节臂	46	46	46	46	92	46	46	92	92	92	92	92	92	92	100	4th boom 四节臂
5th boom 五节臂	46	92	46	46	92	46	92	92	46	92	92	92	92	92	100	5th boom 五节臂
Top boom 六节臂	46	92	46	92	92	46	92	92	46	92	92	46	92	92	100	Top boom 六节臂
Rope rate 钢丝绳倍率	4	4	4	4	4	4	4	4	4	4	4	4	4	4	4	Rope rate 钢丝绳倍率

# Load Chart-Telescopic Boom

## 性能表 - 主臂

Unit: metric ton



Radius (m) 幅度	12.5	16.5	20.5	24.5	28.5	32.5	36.5	40.5	40.5	44.5	44.5	48.5	52.5	56.0	Radius (m) 幅度
3.0	75.0	36.0	36.0												3.0
3.5	67.0	36.0	36.0	36.0											3.5
4.0	60.0	35.9	36.0	36.0											4.0
4.5	53.0	33.9	36.0	36.0	33.0										4.5
5.0	48.0	32.4	34.8	36.0	32.9										5.0
5.5	35.0	30.8	32.9	34.7	32.8										5.5
6.0	30.3	29.3	31.0	33.5	32.0	27.0									6.0
6.5	26.7	27.0	29.2	31.0	30.0	25.0									6.5
7.0	24.5	24.5	27.4	27.5	27.4	23.0	19.0								7.0
8.0	20.1	19.7	21.8	21.8	21.5	20.0	18.0	17.0	14.3						8.0
9.0	16.2	16.1	17.8	17.8	17.7	16.8	16.1	17.0	13.7	14.5	12.0				9.0
10.0		13.5	15.0	15.0	14.8	14.0	13.8	15.1	13.0	13.5	12.0	10.5			10.0
11.0		11.4	12.7	12.8	12.6	11.9	11.6	13.0	12.3	11.5	12.0	10.5	10.0		11.0
12.0		9.7	11.0	11.0	10.8	10.2	10.0	11.2	11.0	9.9	10.6	10.0	9.5	8.0	12.0
14.0			8.5	8.4	8.3	7.8	7.5	8.4	8.6	7.5	8.3	8.0	7.7	7.4	14.0
16.0			6.6	6.6	6.6	6.1	5.8	6.4	6.8	5.8	6.6	6.3	6.1	6.1	16.0
18.0			5.1	5.3	5.3	4.9	4.5	4.9	5.6	4.6	5.3	5.1	4.8	4.9	18.0
20.0				4.3	4.3	3.9	3.6	3.8	4.6	3.6	4.4	4.1	3.9	3.9	20.0
22.0				3.5	3.5	3.1	2.8	2.95	3.8	2.8	3.7	3.3	3.1	3.0	22.0
24.0					2.8	2.4	2.2	2.2	3.2	2.2	3.0	2.7	2.5	2.5	24.0
26.0						1.9	1.6	1.6	2.6	1.7	2.5	2.2	2.0	2.0	26.0
28.0						1.5	1.1	1.0	2.2	1.2	2.1	1.8	1.5	1.6	28.0
30.0									1.8		1.7	1.4	1.1	1.2	30.0
32.0									1.5		1.3	1.0			32.0
34.0									1.2		1.0				34.0
<b>Telescoping status(%) 伸缩模式</b>															
2nd boom 二节臂	0	0	0	0	0	46	92	92	0	92	0	46	92	100	2nd boom 二节臂
3rd boom 三节臂	0	0	0	0	46	46	46	92	46	92	92	92	92	100	3rd boom 三节臂
4th boom 四节臂	0	0	0	46	46	46	46	46	92	92	92	92	92	100	4th boom 四节臂
5th boom 五节臂	0	0	46	46	46	46	46	46	92	46	92	92	92	100	5th boom 五节臂
Top boom 六节臂	0	46	46	46	46	46	46	46	92	46	92	92	92	100	Top boom 六节臂
Rope rate 钢丝绳倍率	11	6	6	6	5	4	4	4	4	4	4	4	4	4	Rope rate 钢丝绳倍率

# Load Chart-Telescopic Boom

## 性能表 - 主臂

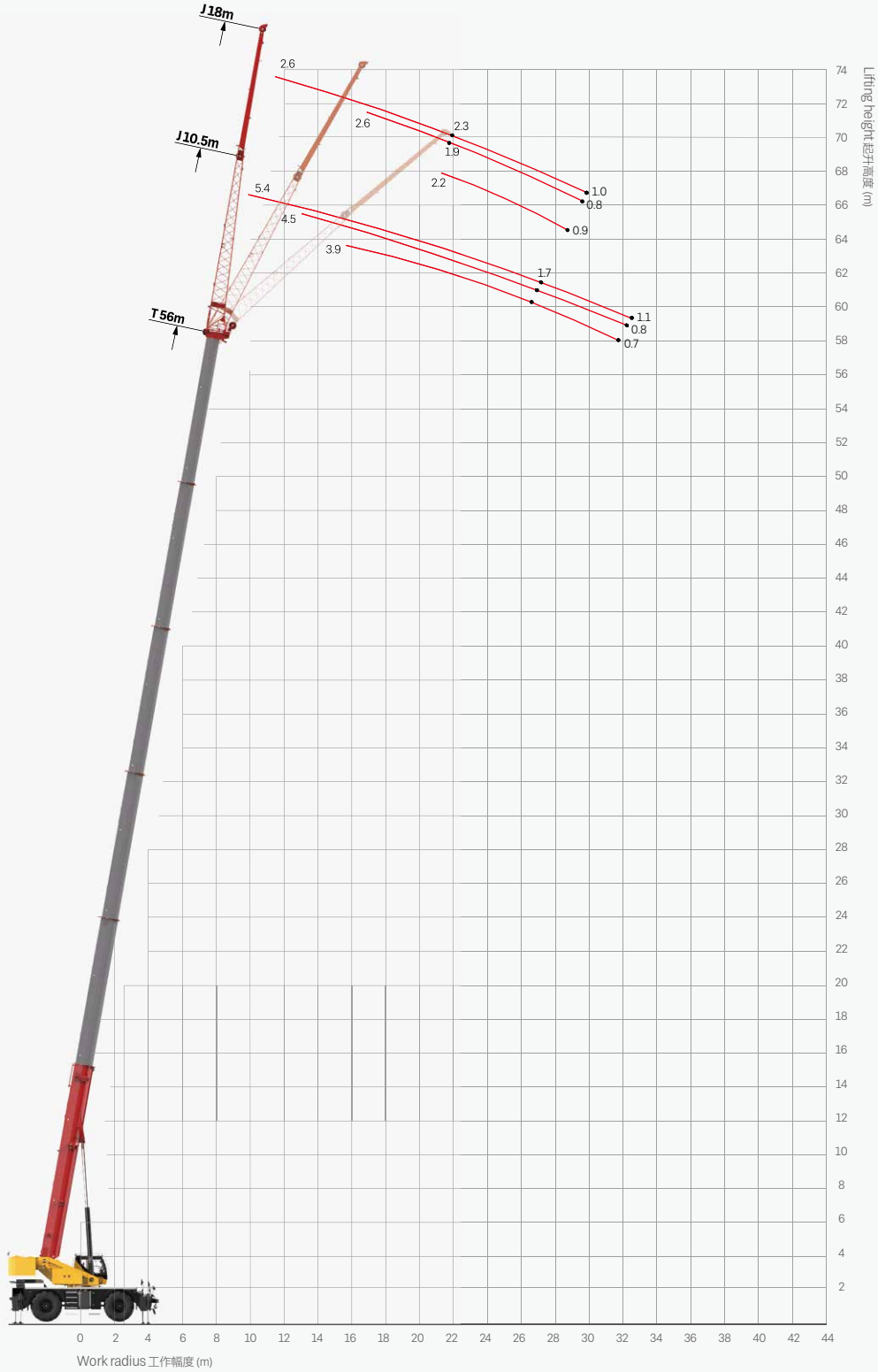
Unit: metric ton



Radius (m) 幅度	12.5	16.5	20.5	24.5	28.5	32.5	36.5	40.5	40.5	44.5	44.5	48.5	52.5	56.0	Radius (m) 幅度
3.5	28.0														3.5
4.0	24.0	22.2													4.0
4.5	21.0	20.0	21.6												4.5
5.0	19.5	18.8	19.1	18.0	18.3										5.0
5.5	17.2	16.7	17.0	16.0	16.5	16.0									5.5
6.0	14.9	14.7	15.0	14.2	15.1	14.0									6.0
6.5	12.9	13.0	13.5	13.0	13.5	12.5									6.5
7.0	11.3	12.0	12.1	11.8	12.3	11.1	11.0								7.0
8.0	8.9	9.7	10.0	9.6	10.0	9.3	9.0	9.0	10.0						8.0
9.0	7.0	7.9	8.3	7.9	8.3	7.7	7.5	7.4	8.5	7.5	8.7				9.0
10.0		6.6	7.0	6.6	7.0	6.5	6.2	6.2	7.2	6.5	7.4	6.5			10.0
11.0		5.5	5.8	5.6	5.9	5.4	5.2	5.1	6.2	5.5	6.3	5.5	5.6		11.0
12.0		4.6	4.9	4.6	5.0	4.5	4.3	4.2	5.2	4.6	5.4	4.5	4.6	5.0	12.0
14.0			3.5	3.2	3.5	3.3	3.0	2.9	4.0	3.3	4.0	3.5	3.4	3.5	14.0
16.0			2.5	2.1	2.6	2.3	1.9	2.0	3.0	2.3	3.0	2.5	2.4	2.5	16.0
18.0				1.5	1.8	1.3	1.2	0.9	2.3	1.2	2.3	1.5	1.7	1.8	18.0
20.0									1.7		1.7	1.0		1.3	20.0
22.0									1.3						22.0
<b>Telescoping status(%) 伸缩模式</b>															
2nd boom 二节臂	0	0	0	0	0	46	92	92	0	92	0	46	92	100	2nd boom 二节臂
3rd boom 三节臂	0	0	0	0	46	46	46	92	46	92	92	92	92	100	3rd boom 三节臂
4th boom 四节臂	0	0	0	46	46	46	46	46	92	92	92	92	92	100	4th boom 四节臂
5th boom 五节臂	0	0	46	46	46	46	46	46	92	46	92	92	92	100	5th boom 五节臂
Top boom 六节臂	0	46	46	46	46	46	46	46	92	46	92	92	92	100	Top boom 六节臂
Rope rate 钢丝绳倍率	4	4	4	4	4	4	4	4	4	4	4	4	4	4	Rope rate 钢丝绳倍率

# Operating Range - Fixed Jib

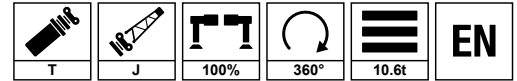
## 起升高度曲线 - 副臂



## Load Chart - Fixed Jib

性能表 - 副臂

Unit: metric ton



Boom angle 主臂仰角 (°)	56.0m+10.5m			56.0m+18m			Boom angle 主臂仰角 (°)
	0°	20°	40°	0°	20°	40°	
80	5.4	4.5	3.9	3.0	2.6	2.2	80
79	5.3	4.5	3.8	3.0	2.5	2.2	79
78	5.1	4.4	3.7	2.9	2.5	2.2	78
77	4.9	4.3	3.6	2.9	2.4	2.1	77
76	4.7	4.1	3.4	2.9	2.4	2.1	76
75	4.5	3.9	3.2	2.8	2.3	2.1	75
73	4.1	3.7	2.9	2.7	2.2	2.0	73
70	3.0	2.7	2.5	2.3	1.9	1.8	70
68	2.4	2.3	2.1	1.9	1.5	1.4	68
65	2.0	1.9	1.7	1.3	1.1	1.1	65
63	1.7	1.6	1.4	1.0	0.8	0.9	63
60	1.4	1.2	1.1				60
58	1.1	0.8	0.7				58

## Load Chart - Telescopic Boom, Pick & Carry, Load Over Front

性能表 - 主臂带载行驶 (正前方)

Unit: metric ton



Radius (m) 幅度	12.5m	16.5m	20.5m	24.5m	28.5m	Radius (m) 幅度
4.5	15.1					4.5
5.0	13.6					5.0
5.5	12.3					5.5
6.0	11.1	13.0				6.0
6.5	10.0	12.0				6.5
7.0	9.1	11.0				7.0
8.0	7.5	9.0	10.0			8.0
9.0	6.2	8.0	8.5	8.6	8.7	9.0
10.0		6.5	7.1	7.5	7.7	10.0
11.0		5.4	6.0	6.5	6.8	11.0
12.0		4.5	5.1	5.8	6.2	12.0
14.0			3.7	4.5	4.8	14.0
16.0			2.8	3.7	3.8	16.0
18.0				2.7	2.8	18.0
20.0				1.9	2.1	20.0
22.0					1.4	22.0
Telescoping status(%) 伸缩模式						
2nd boom 二节臂	0	0	0	0	0	2nd boom 二节臂
3rd boom 三节臂	0	0	0	0	0	3rd boom 三节臂
4th boom 四节臂	0	0	0	0	0	4th boom 四节臂
5th boom 五节臂	0	0	0	46	92	5th boom 五节臂
Top boom 六节臂	0	46	92	92	92	Top boom 六节臂
Rope rate 钢丝绳倍率	4	4	4	4	4	Rope rate 钢丝绳倍率

# Load Chart - Telescopic Boom, On Tires Stationary, Load Over Front

## 性能表 - 轮胎静止吊载 (正前方)

Unit: metric ton



Radius (m) 幅度	12.5m	16.5m	20.5m	24.5m	28.5m	Radius (m) 幅度
4.5	19.8					4.5
5.0	17.7					5.0
5.5	16.0					5.5
6.0	14.4	14.1				6.0
6.5	13.1	12.9				6.5
7.0	11.9	11.9				7.0
8.0	9.9	9.7	10.6			8.0
9.0	8.3	8.3	9.0	9.0	9.1	9.0
10.0		7.0	7.6	7.8	8.1	10.0
11.0		5.9	6.5	6.7	7.1	11.0
12.0		5.0	5.5	6.0	6.5	12.0
14.0			4.0	4.7	5.0	14.0
16.0			3.0	3.8	4.0	16.0
18.0				2.8	3.0	18.0
20.0				2.0	2.3	20.0
22.0				1.3	1.6	22.0
24.0					1.1	24.0
Telescoping status(%) 伸缩模式						
2nd boom 二节臂	0	0	0	0	0	2nd boom 二节臂
3rd boom 三节臂	0	0	0	0	0	3rd boom 三节臂
4th boom 四节臂	0	0	0	0	0	4th boom 四节臂
5th boom 五节臂	0	0	0	46	92	5th boom 五节臂
Top boom 六节臂	0	46	92	92	92	Top boom 六节臂
Rope rate 钢丝绳倍率	4	4	4	4	4	Rope rate 钢丝绳倍率

# Load Chart - Telescopic Boom, On Tires Stationary, 360° Slewing

## 性能表 - 轮胎静止吊载 (360°)

Unit: metric ton



Radius (m) 幅度	12.5m	16.5m	20.5m	24.5m	28.5m	Radius (m) 幅度
4.5	12.0					4.5
5.0	9.8					5.0
5.5	8.3					5.5
6.0	7.0	7.9				6.0
6.5	5.7	6.9				6.5
7.0	4.9	6.0				7.0
8.0	3.5	4.6	4.9			8.0
9.0	2.4	3.6	3.9	4.1	4.2	9.0
10.0		2.8	3.1	3.3	3.4	10.0
11.0		2.1	2.4	2.6	2.7	11.0
12.0		1.3	1.8	2.0	2.1	12.0
14.0			1.0	1.2	1.3	14.0
<b>Telescoping status(%) 伸缩模式</b>						
2nd boom 二节臂	0	0	0	0	0	2nd boom 二节臂
3rd boom 三节臂	0	0	0	0	0	3rd boom 三节臂
4th boom 四节臂	0	0	0	0	0	4th boom 四节臂
5th boom 五节臂	0	0	0	46	92	5th boom 五节臂
Top boom 六节臂	0	46	92	92	92	Top boom 六节臂
Rope rate 钢丝绳倍率	4	4	4	4	4	Rope rate 钢丝绳倍率

**Remark**

1. Capacities are applicable at 525kPa cold tire inflation pressure.
2. Capacities are applicable only with machine on firm level surface.
3. On tire lifting with the jib mounted is not permitted.
4. Axle lockouts must be applied when lifting on tires.
5. Parking brake must be applied when lifting on tires stationary.
6. Driving speed shall be ~4km/h at pick & carry mode.

1. 冷态轮胎气压需保持 525kPa。
2. 起重机需在平整坚固的地面上作业。
3. 轮胎吊载工况不允许使用副臂吊载。
4. 轮胎吊载工况中，车桥悬挂需锁定。
5. 轮胎静止吊载工况中，需使用驻车制动。
6. 带载行驶工况中，直线行驶速度需小于等于 4km/h。



## SANY GROUP CRANE BU

SANY Mobile Crane Industrial Park, No.168 Jinzhou Avenue, Jinzhou Development Zone, Changsha City,  
Hunan Province, P.R. China Zip 410600  
Consulting [sanycrane@sanygroup.com](mailto:sanycrane@sanygroup.com) (Crane BU) / [crd@sany.com.cn](mailto:crd@sany.com.cn) (IHQ)  
After-sales Service 0086-400 6098 318

Reminder:

Any change in the technical parameters and configuration due to product modification or upgrade may occur without prior notice.  
The machine in the picture may include additional equipment. This brochure is for reference only, and goods in kind shall prevail.  
Copyright at SANY. No part of this brochure may be copied or used for any purpose without written approval from SANY.

© Edited in July 2022

### 三一集团起重事业部

中国湖南长沙金洲开发区金洲大道 168 号 三一汽车起重机产业园 邮编: 410600  
咨询: [sanycrane@sanygroup.com](mailto:sanycrane@sanygroup.com) (起重事业部) / [crd@sany.com.cn](mailto:crd@sany.com.cn) (国际总部)  
海外售后服务: 0086-400 6098 318

温馨提示:

由于技术不断更新, 技术参数及配置如有更改, 恕不另行通知。图中机器可能包括附加设备, 本画册仅供参考, 以实物为准。  
版权为三一所有, 未经三一书面许可, 本画册任何内容不得被复制用于任何目的。

© 2022 年 7 月版

